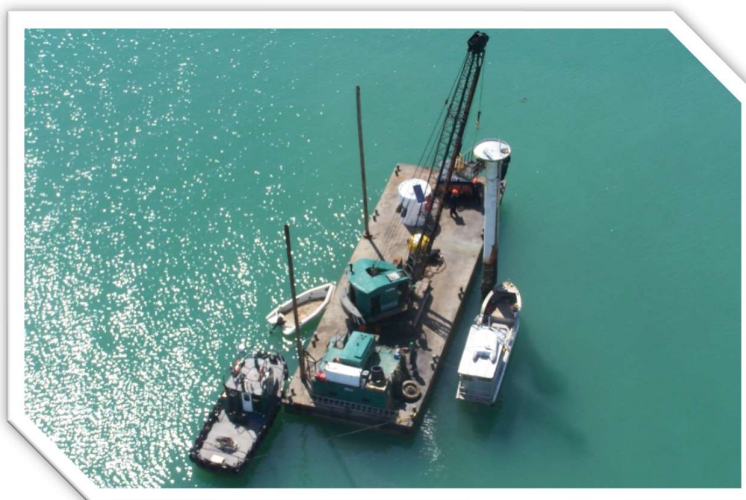




**TOTAL MARINE SERVICES LTD**  
PO Box 9, Waiwaka, Auckland, Ph. 09 379 9752 Fax 09 379 9751

## Thor | Flat Deck Work Barge



### *Specifications*

- Lift Capacity (Overreach): 10T
- Overall Length: 24.0m
- Draft at Midships: 0.9m
- Crawler: Ruston Bucyrus 22RB
- Breadth: 7.5m

### *Operation*

- Jib Length/Reach: 15.24m, 7.0m
- Spuds: 2x 12m

## Odin | Flat Deck Work Barge



### *Specifications*

- Lift Capacity (Overreach): 8T
- Overall Length: 22.0m
- Draft at Midships: 0.9m
- Crawler: Ruston Bucyrus 22RB
- Breadth: 6.5m

### *Operation*

- Jib Length/Reach: 15.24m, 7.0m
- Spuds: 2x 12m

FIND MORE INFORMATION BELOW:  
[totalmarineservices.co.nz/resources.html](http://totalmarineservices.co.nz/resources.html)



**TOTAL MARINE SERVICES LTD**  
PO Box 9, Waiwaka, Auckland, Ph: 09 379 9752 Fax: 09 379 9751

## Kaimahi | Flat Deck Sectional Barge



### *Specifications*

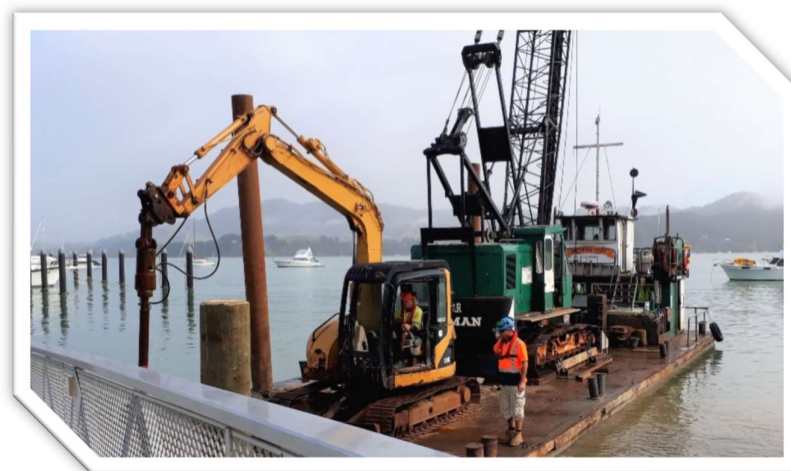
- Lift Capacity (Overreach): 8T
- Overall Length: 18.0m
- Draft at Midships: 0.5m
- Crane: NCK 225 Alpine
- Breadth: 11.9m
- Jib Length/Reach: 21.25m, 5.67m

### *Operation*

- Spuds: 2x 12m

## Northland Piler | Self-Propelled Work Barge

MNZ : 101861



### *Specifications*

- Lift Capacity: 15TM, 9.9T @ 13.17m
- Overall Length: 20.10m
- Freeboard: 560mm
- Draft at Midships: 1.5m
- Breadth: 7.2m
- Gross Tonnage: 49T

### *Operation*

- Crane: Prestman Jib 17.5m
- Spuds: 2x 18m
- Engine: 2x Twin Fords (130 BHP)

FIND MORE INFORMATION BELOW:  
[totalmarineservices.co.nz/resources.html](http://totalmarineservices.co.nz/resources.html)



TOTAL MARINE SERVICES LTD

PO Box 9, Waiwaka, Auckland, Ph: 09 379 9752 Fax: 09 379 9751

## Foveaux Trader | Dredge Barge



### *Specifications*

- Capacity: Hopper 100m<sup>3</sup>
- Overall Length: 23.85m
- Draft at Midships: 1.5m
- Breadth: 10m

### *Operation*

- Z-axis 270° 18m Long Reach
- Power-Driven Spuds: 2x 12m

## Hatea Trader | Dredge Barge



### *Specifications*

- Capacity: Hopper 100m<sup>3</sup>
- Overall Length: 18m
- Draft at Midships: 1.85m
- Breadth: 10m

### *Operation*

- Z-axis 270° 18m Long Reach
- Power-Driven Spuds: 2x 10m

FIND MORE INFORMATION BELOW:  
[totalmarineservices.co.nz/resources.html](http://totalmarineservices.co.nz/resources.html)



TOTAL MARINE SERVICES LTD

PO Box 9, Waiwaka, Auckland, Ph. 09 379 9752 Fax 09 379 9751

## Maui | Dumb Barge

MNZ : 101727



### *Specifications*

- Overall Length: 30m
- Freeboard: 1.45m
- Draft at Midships: 1.85m
- Breadth: 12.2m
- Gross Tonnage: 443T

### *Operation*

- Crane: IHI 50T
- Power-Driven Spuds: 2x 20m

## Derrick Punt | Dumb Barge



### *Specifications*

- Lift Capacity (Overreach): 3T
- Overall Length: 12.0m
- Freeboard: 560mm
- Draft at Midships: 0.7m
- Breadth: 3.9m
- Gross Tonnage: 12T

### *Operation*

- Mobile Lift: UNIC UBA343J
- Power-Driven Spuds: 2x 10m

FIND MORE INFORMATION BELOW:  
[totalmarineservices.co.nz/resources.html](http://totalmarineservices.co.nz/resources.html)





TOTAL MARINE SERVICES LTD

PO Box 9, Waiwaka, Auckland, Ph. 09 379 9752 Fax 09 379 9751

## Koraki | Coastal / Offshore Tug

MNZ : 100565



### *Specifications*

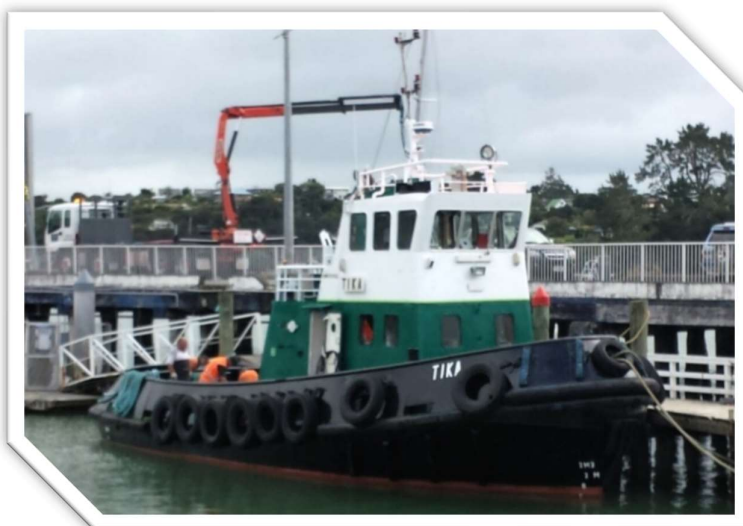
- Bollard Pull: 16T
- Overall Length: 19.7m
- Draft Aft: 3.3m
- Gross Tonnage: 125T
- Breadth: 6.87m
- Call Sign: ZMA2088

### *Operation*

- Engine: 2x V8149 (1300 BHP)
- Auxiliary: 4cylinder Ford
- Speed: 10knots

## Tika | Coastal Tug

MNZ : 100698



### *Specifications*

- Bollard Pull: 8T
- Overall Length: 17.3m
- Draft Aft: 2.1m
- Gross Tonnage: 83T
- Breadth: 5.3m
- Call Sign: ZMV2092

### *Operation*

- Engine: 2x Caterpillar D-343 730HP
- Auxiliary: Lister S

FIND MORE INFORMATION BELOW:  
[totalmarineservices.co.nz/resources.html](http://totalmarineservices.co.nz/resources.html)



**TOTAL MARINE SERVICES LTD**  
PO Box 9, Waiwaka, Auckland, Ph. 09 379 9752 Fax 09 379 9751

## Kaitoa | Inshore Tug MNZ : 100245



### *Specifications*

- Gross Tonnage: 30T
- Overall Length: 13.44m
- Draft Aft: 2.1m
- Bollard Pull: 3T
- Breadth: 2.82m
- Call Sign: ZMV 8141

### *Operation*

- Engine: Detroit Diesel 8V71

## Rawhiti | Inshore Tug MNZ : 100512



### *Specifications*

- Overall Length: 12.9m
- Draft Aft: 1.3m
- Displacement: 30T
- Bollard Pull: 4.2m
- Breadth: 3T
- Call Sign: ZMA2550

### *Operation*

- Main engine: 8L3B Gardner
- Speed: 9knots

FIND MORE INFORMATION BELOW:  
[totalmarineservices.co.nz/resources.html](http://totalmarineservices.co.nz/resources.html)



TOTAL MARINE SERVICES LTD  
PO Box 9, Waiwaka, Auckland, Ph: 09 379 9752 Fax: 09 379 9751

## Kaitiaki | Inshore Tug

MNZ : 100788



### Specifications

- Overall Length: 10m
- Draft Aft: 1.8m
- Displacement: 16T
- Bollard Pull: 2.5T
- Breadth: 3.4m
- Call Sign: ZMX5046

### Operation

- Engine: 6LTJ Gardner (250 BHP)

## Kaipara | Inshore Tug

MNZ : 124303



### Specifications

- Towing Capacity: 3T
- Overall Length: 8.1m
- Draft Aft: 1.5m
- Bollard Pull: 2T
- Breadth: 3.3m
- Gross Tonnage: 12.0T

### Operation

- Engine: Detroit 6v53 (210HP)
- Speed: 9knots (free), 6knots (tow)

FIND MORE INFORMATION BELOW:  
[totalmarineservices.co.nz/resources.html](http://totalmarineservices.co.nz/resources.html)



**TOTAL MARINE SERVICES LTD**  
PO Box 9, Waiwaka, Auckland, Ph: 09 379 9752 Fax: 09 379 9751

## Kapai | Pusher Tug MNZ : 132654



### *Specifications*

- Towing Capacity: 1T
- Overall Length: 5.5m
- Draft Aft: 1.2m
- Gross Tonnage: 5T
- Beam: 2.4m

### *Operation*

- Engine: Ford (130 BHP)
- Speed: 5knots (free), 3knots (tow)





TOTAL MARINE SERVICES LTD

PO Box 9, Waiwaka, Auckland, Ph 09 379 9752 Fax 09 379 9751

## Long Reach | Excavator



### *Specifications*

- Bucket Capacity: 0.51m<sup>3</sup> - 1.2m<sup>3</sup>
- Maximum Digging Depth: 6m
- Overall Length: 18m
- Operating Weight: 20T
- Track Length: 3.4m
- Overall Width: 3.2m

### *Operation*

- 15m Long Reach Hitachi EX200
- 3DM Equipment Available

## Mobile Crane | 90T



### *Specifications*

- Model: P&H 8100-TC
- Max Boom Length: 60.96m

## Other Listed Plant & Equipment:

Work Barge 4T (10x3.2m) | Materials Barge

St. Moritz | Survey Rig

Wee Willie | Service Tug

Mac Boats | 3x Reinforced RIBs

Forkhoist 10T | All-Terrain Tracks

Hino 12T | Tadano Crane 5T

FIND MORE INFORMATION BELOW:  
[totalmarineservices.co.nz/resources.html](http://totalmarineservices.co.nz/resources.html)